



ACCREDITATIONS

An application will be made to the following Swiss Scientific Society:

- *Société Suisse de Médecine Intensive (SSMI/SGI)* **requested**
- *Association Suisse de Médecine d'Urgence (SSMUS/SGNOR)* **requested**
- *Société Suisse d'Anesthésiologie et de Réanimation (SSAR/SGAR)* **requested**
- *Société Suisse de Médecine Interne Générale (SSMG/SGIM)* **requested**
- *Fédération Suisse des Infirmières et Infirmiers Anesthésistes (FSIA/SIGA)* **requested**

Geneva, 2017
February 6th–8th

2^o WINFOCUS SWISS
CONGRESS

ECHOGRAPHY
AND EMERGENCY

Official Website: www.winfocus.ch



Organizing Secretariat
Via Ciovasso 4 – 20121 Milano
Tel. +39 02 29534181 – Fax. +39 02 29532309
Email: laura.luraschi@tccompany.it
www.tccompany.it

PRELIMINARY PROGRAM



Welcome Address

Dear colleagues,
on February, 6th we will inaugurate the «2^o Winfocus-Switzerland Congress» directed as the previous year by Prof. Karim Bendjelid and coordinated by an international, renowned and well known worldwide faculty.

The event will be structured into three days: an exciting scientific **first day** entitled «Ultrasound in acute disease» where international speakers will discuss the echography assessment in all highest emergencies fields (i.e. emergency department, Intensive Care Unit, Operating Theatre, etc...). Moreover, this day will be a unique happening for Winfocus-Switzerland: all members will be able to actively join the scientific works, discussing directly with all experts in the post-lecture meetings and encounter these renowned colleagues throughout the social sessions.

The **second and third day** will be two didactical dates: there will be eight parallels courses entirely dedicated to ultrasounds, both with a basic and advanced level. All basic courses are dedicated to the professionals who have to approach the emergency ultrasound for the first time; while advanced courses are dedicated to those who already know the basic elements of ultrasounds and want to improve their knowledge in a specific field. Moreover, attention should be dedicated to our nursing section, an exclusive of Winfocus-Switzerland, which in previous years has brought enormous enthusiasm to those involved in the field, who have been able to better understand the application of ultrasound in theoretic clinical area and in daily clinical practice.

The presence of small workgroups, especially during the several workshops, is another key element to ensure good quality of the course. Indeed, the present symposium will allow, all our colleagues interested in learning these techniques, to work side by side with the greatest international experts in the subject, in order to better learn this medical field of high practical interest. The presence of an interdisciplinary faculty and internationally renowned directors is really a key-element of this Congress that will offer a first level scientific program that will thrill all participants.

BOARD AND COMMITTEE

SCIENTIFIC DIRECTOR

Karim Bendjelid, Geneva

CONGRESS ORGANIZER

Samuele Ceruti, Geneva

Marco Betello, Geneva

WINFOCUS DIRECTORS

Carmela Graci, Milan

Bret Nelson, New York

Luca Neri, Milan

Gabriele Via, Pavia

Karim Bendjelid, Geneva

COURSES COORDINATORS

Karim Bendjelid, Geneva

Francesco Caronni, Lugano

Daniele Franceschini, Bellinzona

Antonio Lo Piccolo, Bellinzona

Bret Nelson, New York

Deborah Pugin, Geneva

Andrea Saporito, Bellinzona

Gabriele Via, Pavia

Giovanni Volpicelli, Torino

ORGANIZING SECRETARIAT



Via Ciovasso 4 – 20121 Milano – Italy
Tel. +39 02 29534181 – Fax. +39 02 29532309
Email: laura.luraschi@tccompany.it
www.tccompany.it

Timetable

2° Winfocus Switzerland Congress

February 6th

A.M.

Plenary symposium: "Ultrasound in acute disease"
(common for all courses)

P.M.

February 7th

A.M.

Lung US

Neuro US

Nurse US

WBE

MTWBE

USLS-BL

USLS-AL

P.M.

February 8th

A.M.

Lung US

Nurse US

WBE

MTWBE

USLS-BL

USLS-AL

P.M.

Ultrasound in acute disease

February 6th

During the Symposium, international speakers will discuss the echography assessment in all highest emergencies fields (i.e. emergency department, Intensive Care Unit, Operating Theatre, etc...). Moreover, this day will be a unique happening for Winfocus-Switzerland: all members will be able to actively join the scientific works, discussing directly with all experts in the post-lecture meetings and encounter these renowned colleagues throughout the social sessions.

FACULTY

Dr. med. M. Baeriswyl – CHUV (Lausanne)

Prof. K. Bendjelid – HUG (Genève)

Dr. med. E. Albrecht – CHUV (Lausanne)

Dr. med. C. Gantner – KSW (Zurich)

Dr. med. T. Geeraerts – CHU (Bordeaux)

Dr. med. P. Grossi – Policlinico San Donato (Milano)

Prof. C. Kern – CHUV (Lausanne)

Dr. med. A. Lavino – NHS (Cambridge)

Dr. med. B. Levi – Nancy University Hospitals (Nancy)

Prof. B. Nelson – Mount Sinai (New York)

Dr. med. L. Neri – Niguarda (Milano)

Prof. T. Petrovich – HDP (Paris)

Dr. med. D. Pugin – HUG (Genève)

Dr. med. A. Saporito – ORBV (Bellinzona)

Dr. med. B. Saugel – University Medical Center Hamburg-Eppendorf (Munich)

Dr. med. P. Schoettker – CHUV (Lausanne)

Dr. med. G. Via – S. Matteo (Pavia)

Dr. med. G. Volpicelli – S. Luigi Gonzaga (Torino)

February 6th

8.00 – 8.30	Registrations	
8.30 – 10.45	Vision & Mission of WF	L. Neri
8.45 – 10.45	PULMONARY SESSION	
	Chairman: B. Nelson	
	xxxx	G. Volpicelli
	Lung ultrasound basics	B. Nelson
	xxx	C. Gantner
	Roundtable	G. Volpicelli, B. Nelson, C. Gantner
10.45 – 11.00	Coffee break	
11.00 – 13.15	HEMODYNAMIC SECTION	
	Chairman K. Bendjelid	
	Point of Care Ultrasound for Fluid Status Assessment	G. Via
	I need echocardiography for cardiogenic shock	K. Bendjelid
	Cardiogenic shock monitoring: echocardiography is not (always) sufficient	B. Levi
	Perioperative Echocardiography	B. Saugel
	Roundtable	G. Via, K. Bendjelid, B. Levi, B. Saugel
13.15– 14.15	Lunch break	
14.15 – 16.00	NEUROLOGIC SECTION	
	Chairman D. Pugin	
	Cerebral blood flow autoregulation	A. Lavino
	Brain echography	T. Geeraerts
	Usefulness of Transcranial Doppler in prehospital emergency medicine	T. Petrovich
	Roundtable	D. Pugin, A. Lavino, T. Geeraerts, T. Petrovich
16.00 – 16.15	Coffee break	
16.15 – 18.00	ANESTHESIOLOGY SECTION	
	Chairman: C. Kern	
	Ultrasound guided interventional pain procedures	P. Grossi
	Ultrasound-assisted neuraxial blocks should be systematically performed: pro/contra	A. Eric/M. Baeriswyl
	The limits of ultrasound guided peripheral nerve blocks	A. Saporito
	Airway management: do we finally see what we don't see with our naked eyes?	P. Schoettker
	Roundtable	C. Kern, P. Grossi, A. Eric, M. Baeriswyl, P. Schoettker
18.00	End of Symposium	

Lung UltraSound (LungUS)



February 7th



February 8th

WINFOCUS Basic Echo-ICU (WBE)



DIRECTOR

G. Via

FACULTY

G. Via (Ospedale S. Matteo, Pavia)

P. Abraham (HUG, Genève)

C. Ballmer (Kinderspital, Zurich)

R. Giraud (HUG, Genève)

O. Groscurin (HUG, Genève)

This course focuses on echocardiography in the very specific context of emergency and critical care medicine. The aim of the course is to give a sound knowledge about practical and easy to learn protocols, which can be incorporated into the diagnostic algorithm of critical patients in order to rapidly reach a diagnosis and manage unstable patients.

A sound knowledge of basic ultrasound is required. Participants will be thought cardiac anatomy and sono-anatomy, images acquisition techniques and common pathological echographic patterns, contextualized in ACLS protocols in order to learn how to perform a completed ultrasound-assisted advanced life-support.

February 7th

8.00 – 8.30 Registrations
8.30 – 9.00 Physics of ultrasounds – plenary session
9.15 – 10.30 Focused Cardiac Ultrasound in Critical Care
Anatomy of the heart: basic TTE view – eyeballing principles

A. Saporito
G. Via

G. Via

10.30 – 11.00 Coffee break
11.00 – 13.00 HANDS-ON TRAINING SESSION 1

Normal FoCUS views
1. Normal clips
2. Parasternal views
3. Apicals views
4. Subcostal view
5. Vena Cava view

13.00 – 14.00 Lunch break

14.00 – 16.00 Basic assessment of LV systolic function xxx
Basic assessment of RV function xxx
Basic assessment of volume status xxx
Basic assessment of tamponade xxx

16.00 – 16.30 Coffee break
16.30 – 18.00 HANDS-ON TRAINING SESSION 2

1. Patho clips
2. Apicals Views
3. Parasternal views
4. Subcostal view

18.00 End of day

18.00 – 20.00 General WF-CH Assembly

February 8th

8.30 – 10.00 Basic 2-D echo knobology
Basic valves assessment
Pitfalls & limitations of focused cardiac ultrasound

10.00 – 10.30 Coffee break

10.30 – 13.00 Overall Approach to shock
FoCUS in cardiac Arrest: the FEEL protocol
The WINFOCUS FoCUS certification pathway G. Via

13.00 – 14.00 Lunch break

14.00 – 16.00 HANDS-ON TRAINING SESSION 3

ACLS megacode
Shock megacode
e-cases
Focus views review
Focus view review

16.00 – 16.30 Coffee break

16.30 – 18.00 HANDS-ON TRAINING SESSION 4

ACLS megacode
Shock megacode
e-cases
Focus views review
Focus view review

18.00 End of Congress

More than Basic Echo-ICU (MTWBE)



February 7th



DIRECTOR

K. Bendjelid

FACULTY

K. Bendjelid (HUG, Genève)
N. Brugger (HFR, Fribourg)
Y. Fleury (HFR, Fribourg)
B. Pinto (HUG, Genève)

This course goes deeper in Heart Echo and in all clinical scenario encountered in emergency department, ICU and operating theatre; t's especially directed to best manage more advanced problems, like valvular assessment during acute disease, diastolic dysfunction assessment in ICU, how to manage more complex clinical scenario (multiple shock) with the use of ultrasound. This course has been created to increase the practical sessions in which all participants can practically will discuss about practical management of hard situations and commons echocardiographic pitfalls, increasing the experience in the use of echocardiography in own personal clinical setting.

8.00 – 8.30	Registrations	
8.30 – 10.30	Quantitative assessment of LV Systolic function	K. Bendjelid
	Quantitative assessment of RV Systolic function	N. Brugger
10.30 – 11.00	Coffee break	
11.00 – 13.00	HANDS-ON TRAINING SESSION 1	
	1. Left Ventricular function	K. Bendjelid
	2. Right Ventricular function	N. Brugger
13.00 – 14.00	Lunch break	
14.00 – 16.00	Fluid Responsiveness Assessment	K. Bendjelid
	Cardiac Output Measurements	K. Bendjelid
16.00 – 16.30	Coffee break	
16.30 – 18.00	HANDS-ON TRAINING SESSION 2	
	1. Fluid Responsiveness	N. Brugger
	2. Cardiac Output Measurement	K. Bendjelid
18.00	End of day	

18.00 – 20.00 General WF-CH Assembly

February 8th

8.30 – 10.30	Quantitative assessment of LV diastolic function	N. Brugger
10.30 – 11.00	Coffee break	
11.00 – 13.00	Introduction to valvular assessment (mitral and aortic evaluation, tricuspid evaluation)	Y. Fleury
13.00 – 14.00	Lunch break	
14.00 – 16.00	HANDS-ON TRAINING SESSION 3	
	1. Aortic valve assessment	N. Brugger
	2. Mitral valve assessment	K. Bendjelid
	3. Tricuspid valve assessment	Y. Fleury
16.00 – 16.30	Coffee break	
16.30 – 18.00	More than basic valve assessment	N. Brugger
	A global approach	K. Bendjelid
18.00	End of Congress	

Nurse Ultrasound (NUS)



February 7th



DIRECTOR

A. Lo Piccolo

FACULTY

xxx (xxx)

A. Lo Piccolo (EOC, Bellinzona)

C. Graci (Niguarda, Milano)

xxx (EOC, Mendrisio)

8.00 – 8.30	Registrations	
8.30 – 9.00	Physics of ultrasounds – plenary session	A. Saporito
9.00 – 10.30	Introduction Vascular + PICC	A. Lo Piccolo A. Lo Piccolo, D. Franceschini
10.30 – 11.00	Coffee break	
11.00 – 13.00	Lung ultrasound Cardiac ultrasound	A. Lo Piccolo xxx
13.00 – 14.00	Lunch break	
14.00 – 16.00	eFAST Pelvic US	D. Franceschini xxx
16.00 – 16.30	Coffee break	
16.30 – 18.00	BladderUS Pre-Hospital	D. Franceschini xxx
18.00	End of day	

18.00 – 20.00 General WF-CH Assembly

This course is designed for nurses working in the emergency room, anesthesiology and intensive care. It is meant to teach nurses the principles of ultrasound, how to use and properly set an ultrasound machine and how to acquire good images. The techniques thought are meant to help nurses in their everyday practice, improving their outcome through easy and standardized protocols and techniques.

The course will cover: ultrasound guided peripheral venous accesses in case of difficult veins, endotracheal and gastric tubes correct positioning confirmation, bladder scanning for identification of urinary retention and Foley catheter positioning confirmation and many other useful applications.

February 8th

8.30 – 10.30	HANDS-ON TRAINING SESSION 1
10.30 – 11.00	Coffee break
11.00 – 13.00	HANDS-ON TRAINING SESSION 2
13.00 – 14.00	Lunch break
14.00 – 16.00	HANDS-ON TRAINING SESSION 3
16.00 – 16.30	Coffee break
16.30 – 18.00	Final discussion (Q&A) Test
18.00	End of Congress

UltraSound Life Support Basic Level (USLS-BL)



DIRECTOR

A. Saporito

FACULTY

A. Saporito (EOC, Bellinzona)
 B. Minotti (Kantonsspital, St. Gallen)
 M. Betello (HUG, Genève)
 I. Gimigliano (EOC, Bellinzona)
 G. Lecca (Hôpital du Valais, Sion)

This course is meant for beginners. It has been designed to provide a solid ground on which you can build a sound knowledge in emergency and critical care ultrasound. It starts with an introduction about the physics of ultrasound, with the aim of getting you acquainted with the basic principles with the aim of teach you how the machine works and how its setting can be optimized to obtain good images.

An introduction to the ultrasound-assisted ABC will follow, explaining how echography can help you in managing airway management and common cardio-respiratory emergencies. Ultrasound-guided intravenous access will also be thought. Lot of time will be dedicated in the afternoon to hands-on sessions on models and simulators.

February 7th

8.00 – 8.30	Registrations	
8.30 – 9.00	Physics of ultrasounds – plenary session	A. Saporito
9.00 – 10.30	Introduction – Winfocus' certification pathway	A. Saporito, Knobology, B. Minotti
10.30 – 11.00	Coffee break	
11.00 – 13.00	Airway's management LungUS (basic level)	M. Betello A. Saporito
13.00 – 14.00	Lunch break	
14.00 – 16.00	HANDS-ON TRAINING SESSION 1	
	1. Machines' setting	B. Minotti
	2. Airway's management	G. Lecca
	3. Lung US	A. Saporito
	4. Basic echocardiography (anatomy)	I. Gimigliano
16.00 – 16.30	Coffee break	
16.30 – 18.00	Basic echocardiography (anatomy)	I. Gimigliano
18.00	End of day	

18.00 – 20.00 General WF-CH Assembly

February 8th

8.30 – 10.30	HANDS-ON TRAINING SESSION 2	
	1. Basic echocardiography (anatomy)	I. Gimigliano
	2. LungUS	A. Saporito
	3. Clinical e-cases	B. Minotti
	4. Peripheral lines access	M. Betello
10.30 – 11.00	Coffee break	
11.00 – 13.00	eFAST in Emergency Department Central venous lines and US	B. Minotti M. Betello
13.00 – 14.00	Lunch break	
14.00 – 16.00	HANDS-ON TRAINING SESSION 3	
	1. Basic echocardiography (CORE-scan)	I. Gimigliano
	2. eFAST	B. Minotti
	3. Central venous lines	M. Betello
	4. Review	A. Saporito
16.00 – 16.30	Coffee break	
16.30 – 18.00	ABCD in 10 minutes Final test	B. Minotti
18.00	End of Congress	

UltraSound Life Support Advanced Level (USLS-AL)



February 7th



DIRECTOR

B. Nelson

FACULTY

B. Nelson (Mount Sinai, NY)
 L. Neri (Niguarda, Milano)
 J. Coiffier (Hôpital du Valais, Sion)
 L. Anselmi (EOC, Bellinzona)

This course is meant for the ones who have already attended the USLS basic course, or already have sound knowledge of basic ultrasound and want to improve their technique or apply it in an emergency and critical care setting. The course will provide a detailed teaching on ABCD-assisted ultrasound, with detailed lectures on advanced lung and cardiac ultrasound. Many clinical scenarios have been designed in order to test your understanding and make you confident with the practical application of these techniques. In the hands-on session you will have the occasion to practice on models and a session with an advanced simulator will be organized to mimic common clinical scenarios and their ultrasound-assisted management.

8.00 – 8.30	Registrations	
8.30 – 9.30	Airway assessment, procedures & treatment.	
	Clinical protocols	<i>L. Anselmi</i>
9.30 – 10.30	Breathing assessment (effusions, consolidations, pneumothorax, diaphragm impairment)	
	Breathing procedures (needle aspirations, thoracocentesis, thoracotomy)	
	Breathing protocols (the BLUE-protocol)	<i>J. Coiffier</i>
10.30 – 11.00	Coffee break	
11.00 – 13.00	HANDS-ON TRAINING SESSION 1	
	Airway and breathing simulations	
13.00 – 14.00	Lunch break	
14.00 – 15.00	Cardiac assessment (hemodynamic assessment, heart performance, volemic assessment)	
	Cardiac procedures (defibrillator, pacing, pericardiocentesis)	
	Cardiac protocols (FEEL-FATE protocols)	<i>B. Nelson</i>
15.00 – 16.00	Disability assessment (optic nerve evaluation)	
	US-enhanced neurological management	<i>L. Neri</i>
16.00 – 16.30	Coffee break	
16.30 – 18.00	HANDS-ON TRAINING SESSION 2	
	Cardiac and neurologic simulations	
18.00	End of day	

18.00 – 20.00 General WF-CH Assembly

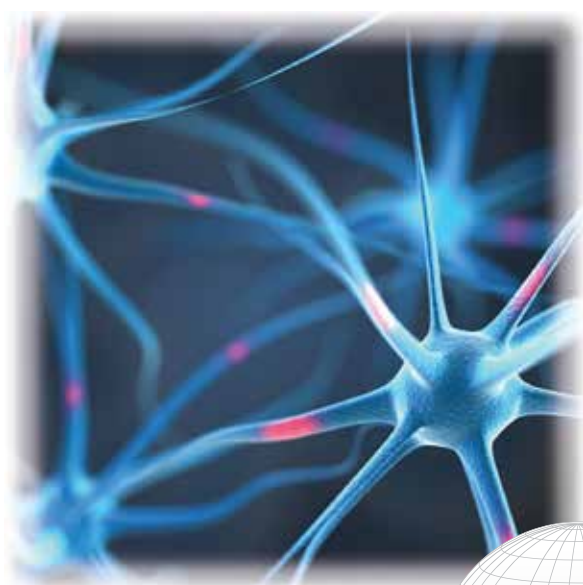
February 8th

8.30 – 10.30	Head assessment: fractures, soft tissue lesions, aortic vascular US	
	Chest fractures, lung contusion, ARDS staging	
	Abdominal assessment (spleen, liver and biliary tracts; visceral organs)	
	US Trauma Life support (US-TLS)	<i>B. Nelson</i>
10.30 – 11.00	Coffee break	
11.00 – 13.00	HANDS-ON TRAINING SESSION 3	
	Head, Thorax and abdomen simulations	
13.00 – 14.00	Lunch break	
14.00 – 16.00	Limb assessment (fractures, muscular and soft tissue lesions)	
	Head-to-toes procedures	
	US-trauma secondary management (US-TLS, US-ACLS, pre-hospital protocols)	<i>L. Neri</i>
16.00 – 16.30	Coffee break	
16.30 – 17.45	HANDS-ON TRAINING SESSION 4	
	Limbs, procedures, US-TLS, US-ACLS	
	Winfocus global initiative for ultrasound; certification process	
18.00	End of Congress	

UltraSound Neurological Assessment (NeuroUS)



February 7th

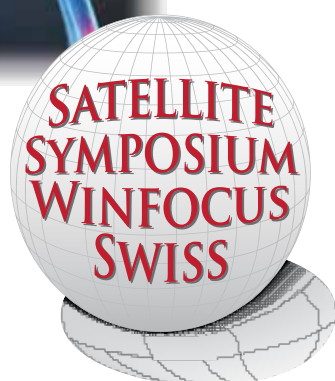


DIRECTOR

D. Pugin

FACULTY

D. Pugin (HUG, Genève)
M. Betello (HUG, Genève)
A. Jeleff (HUG, Genève)
A. Elrahal (HUG, Genève)



The Ultrasound Neurological Assessment course has been created for Emergency and Critical Care specialists. The aim of the course is first to give basic knowledge of TransCranial Doppler and then specifically cover different pathologies present in the ICU or ER (SAH, TBI...) and their management with TransCranial Doppler.

During the afternoon session, practical experience can be gained in different TransCranial Doppler approaches (optic nerve sheath evaluation, parenchymal echography, arterial Doppler). Clinical cases will be presented and discussed at the end of the afternoon.

8.00 – 8.30	Registrations	
8.30 – 9.15	Physic of ultrasound (general)	
9.30 – 10.30	Fundamental of Trans-Cranial Doppler	<i>M. Betello</i>
10.30 – 11.00	Coffee break	
11.00 – 12.00	Traumatic Brain Injury	<i>D. Pugin</i>
12.00 – 13.00	Sub-Arachnoidal Haemorrhage	<i>A. Jeleff</i>
13.00 – 14.00	Lunch break	
14.00 – 16.00	HANDS-ON TRAINING SESSION 1	
	1. CNS parenchima	
	2. Optic nerve	
	3. Mean cerebral Artery	
	4. Traumatic Brain Injury	
16.00 – 16.30	Coffee break	
16.30 – 18.00	Clinical case reports	
18.00	End of day	

18.00 – 20.00 General WF-CH Assembly

GENERAL INFORMATION

All participants who wish to attend the Scientific Sessions are required to register for the meeting. Registration online is preferred and will help in avoiding delays during the meeting itself.

REGISTRATION

Registrations online at www.winfocus.ch.

REGISTRATION FEES

HUG residents

Physician:

- One day congress Ultrasound in acute disease (Febr. 6 th)	free
- UltraSound Neurological Assessment (US-NA) course	320.- CHF
- Ultrasound in acute disease (Febr. 6 th) + UltraSound Neurological Assessment (US-NA)	320.- CHF
- Winfocus course (2 days course to be chosen below)	520.- CHF
- Whole congress (Ultrasound in acute disease + Winfocus course)	520.- CHF

Nurse:

- One day congress Ultrasound in acute disease (Febr. 6 th)	free
- Nurse Ultrasound Course	320.- CHF
- Whole congress (Ultrasound in acute disease + Winfocus course)	320.- CHF

Not HUG-residents:

Physician:

- One day congress Ultrasound in acute disease (Febr. 6 th)	100.- CHF
- UltraSound Neurological Assessment (US-NA) course	320.- CHF
- Ultrasound in acute disease (Febr. 6 th) + UltraSound Neurological Assessment (US-NA)	320.- CHF
- Winfocus course (2 days course to be chosen below)	520.- CHF
- Whole congress (Ultrasound in acute disease + Winfocus course)	520.- CHF

Nurse:

- One day congress Ultrasound in acute disease (Febr. 6 th)	100.- CHF
- Nurse Ultrasound Course	320.- CHF
- Whole congress (Ultrasound in acute disease + Winfocus course)	320.- CHF

REGISTRATION FEE INCLUDES

- Participation all scientific sessions
- Congress Kit
- Attendance Certificate
- Entrance to Exhibition Area
- Coffee Break and Lunches
- Credits from the Swiss Anaesthetist Society

CANCELLATION POLICY

A 70% refund of the registration fee will be paid ONLY for written cancellations prior to December 31st, 2016. No refund will be made after the above date.



LIABILITY AND INSURANCE

The Congress Secretariat and organizers cannot accept liability for personal accidents or loss of or damage to private property of participants, either during or indirectly arising from the participation to the Congress.

VENUE ADDRESS

Hôpitaux Universitaires de Genève

Rue Gabrielle-Perret-Gentil 4,
1205 Geneva
Switzerland

HOW TO REACH THE VENUE

By Car

From highway 1 exit n. 2 Genève Lac – continue to Centre and hospitals
From highway A40 exit n. 13 Lausanne/Aéroport/Cointrin/Centre then A41 follow indication to Centre and hospitals.

Parking in Geneva is quite expensive. To find your parking please visit: www.geneve-parking.ch

From Geneva airport

Take express train to Cornavin Station (7' ride), then take the bus n. 1 (dir. Petit-Bel-Air) or n. 5 (dir. Thônex-Vallard) and get off at Hôpital bus stop.

OR

Take bus line n. 5 and get off at Hôpital bus stop (33' ride)

From Cornavin Train Station

Take the bus n. 1 (dir. Petit-Bel-Air) or n. 5 (dir. Thônex-Vallard) and get off at Hôpital bus stop.

Public transportation in the area

Bus n° 1, 5, 7, 35 | Bus stop name: Hôpital

Tram n° 12 | Bus stop name: Augustins

For any other information please visit: <http://plan-mobilite.hug-ge.ch/>

LANGUAGE

The official language of the Congress is English. No simultaneous translation will be provided, but participants can interact speaking their mother language (French, Italian, German).